

NOTES:

1.0 CONSTRUCTION

- 1.1 MAXIMUM BLADE IMBALANCE: 4.0 gm-cm
- 1.2 MAXIMUM BLADE RUNOUT: 3.15 mm

2.0 PERFORMANCE:

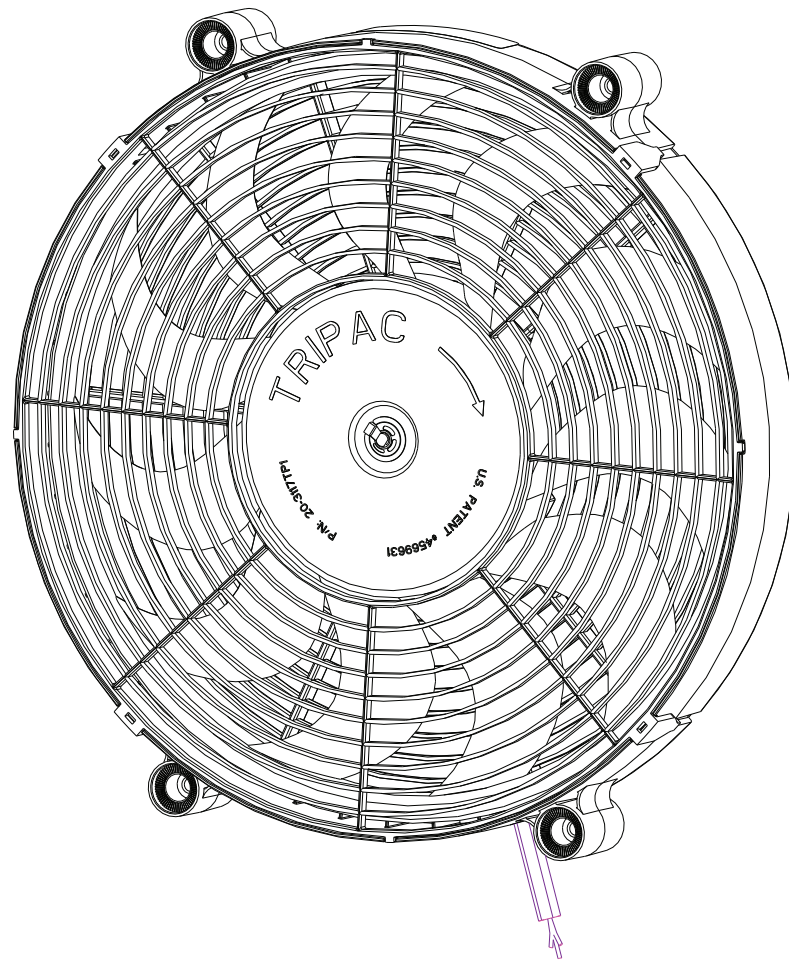
- 2.1 RATED VOLTAGE: 12.0 VOLTS
- 2.2 MAXIMUM CURRENT DRAW:
 - 2.2.1 HIGH SPEED: 24 AMPS
 - 2.2.2 LOW SPEED: 16.5 AMPS
- 2.3 MINIMUM SPEED:
 - 2.3.1 HIGH SPEED: 1700 RPM
 - 2.3.2 LOW SPEED: 1400 RPM
- 2.4 ROTATION: CLOCKWISE (FROM SHAFT SIDE)
- 2.5 FAN TYPE: PUSHER (SHAFT SIDE UP)

3.0 ASSEMBLY

- 3.1 WIRE COLOR:
 - 3.1.1 HIGH SPEED: GREY & BROWN (+)
 - 3.1.2 LOW SPEED: GREY (+)
- 3.2 TORQUE FOR ITEM 3: 2.25-2.84 N.m.

4.0 MATERIAL:

- 4.1 SHROUD, BLADE & FINGERGUARD: 15% GLASS FIBER 25% MINERAL REINFORCED NYLON 66
 - 4.1.1 COLOR: BLACK
 - 4.1.2 MATERIAL SHALL MEET THE FOLLOWING SPECIFICATIONS:
 - 4.1.2.1 TENSILE STRENGTH: 120 MPa
 - 4.1.2.2 DENSITY: 1.46 g/cm³
 - 4.1.2.3 ELONGATION AT BREAK: 3%
 - 4.1.2.4 FLEXURAL MODULUS: 7500 MPa
 - 4.1.2.5 HEAT DEFLECTION TEMPERATURE @ 1.8 MPa: 200°C
- 4.2 TORQUE DRIVE: SINTERED ALLOY



B	08-003	UPDATE PERFORM. SPEC. ADD BACK VIEW W/ ZIPTIE LOCATIONS LEAD LENGTH WAS (750). MOTOR SCREWS WERE 14-7071, REMOVED VIEW	AP	RD	3/6/08
A	06-020	UPDATED NOTES. WIRE COLORS WERE BLUE & YELLOW ADDED ZIPTIES. SHROUD PART# WAS 20-5077-04. ADDED REF DIM 8.7	AP	RD	12/5/06
-		ENGINEERING RELEASE			3/29/06
REV	ECR #	DESCRIPTION	CHG BY	APP'D BY	DATE

ITEM #	TRIPAC P/N	DESCRIPTION	QTY
		Component Part List	

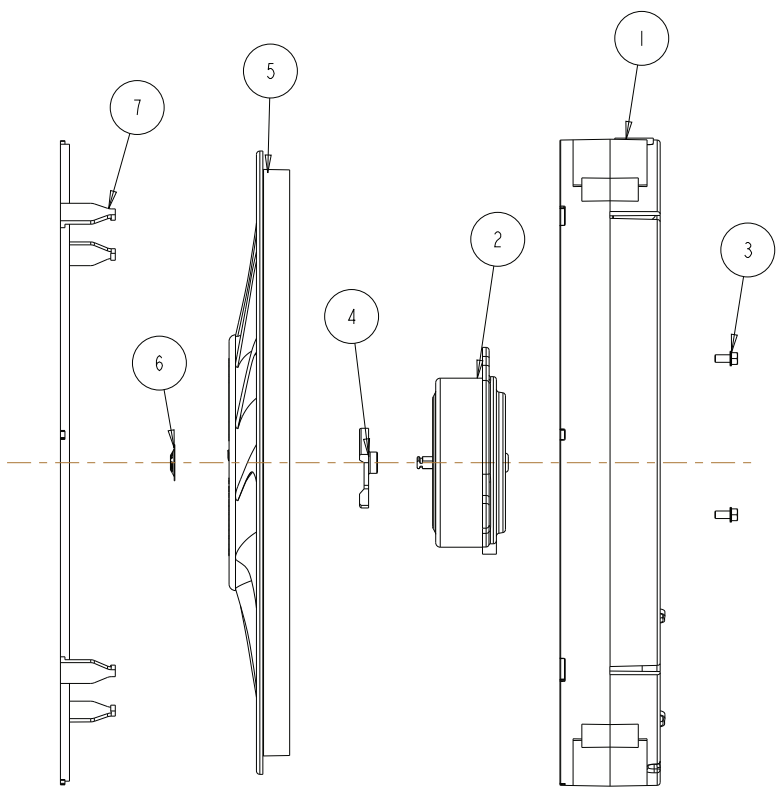
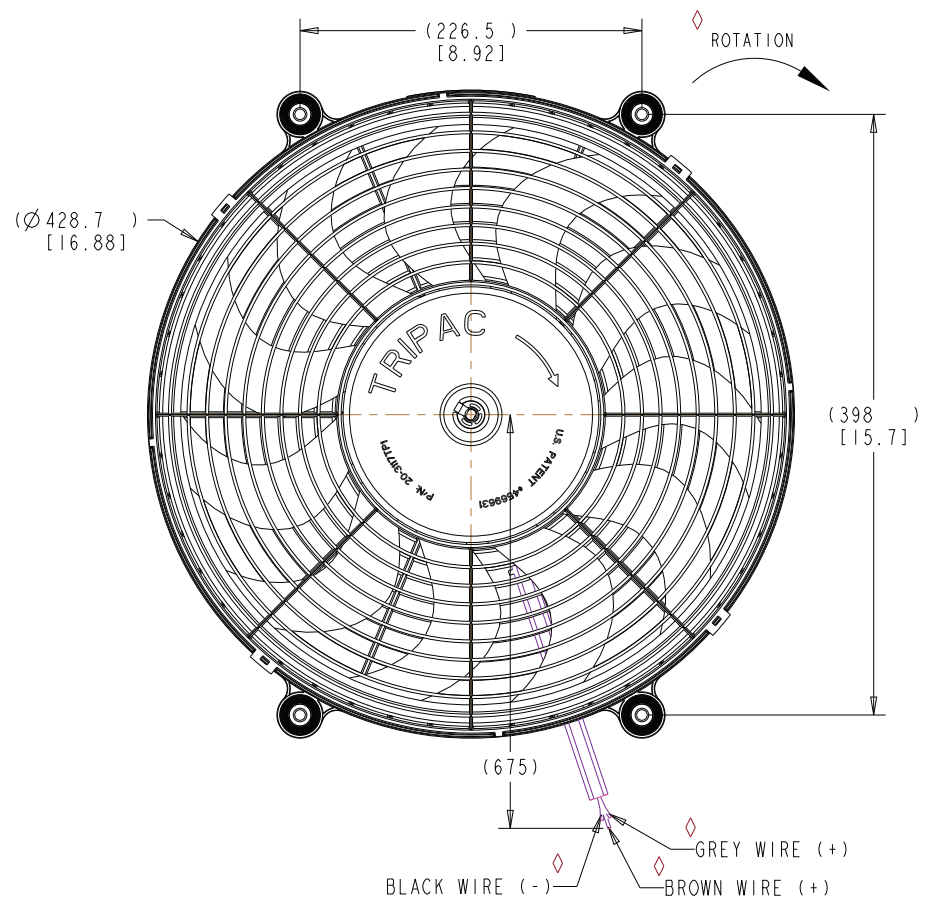
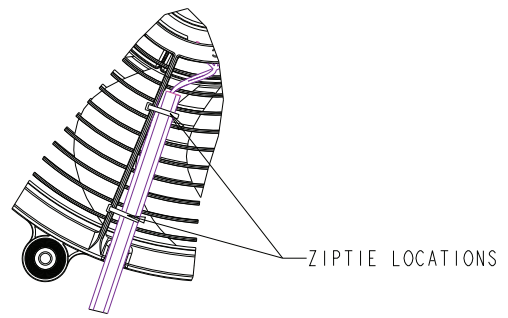
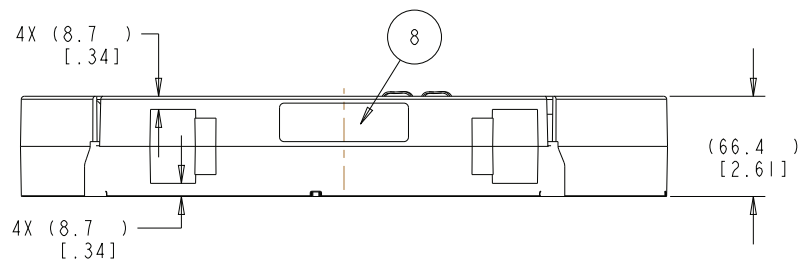
CAD SYSTEM: Pro/E Wildfire		METRIC FORMAT: UNLESS OTHERWISE SPECIFIED DIMENSIONS ARE IN MILLIMETERS WITH IMPERIAL INCH CONVERSIONS IN (INCHES)		Tripac International, Inc. 9224 Oak Grove Road Fort Worth, TX 76140 USA	
THIRD ANGLE PROJECTION 		TOLERANCES UNLESS OTHERWISE SPECIFIED: .0 DEC .00 DEC ANG ± 3 ± .5 ± 2° [(.00) DEC [(.000) DEC [(.XXX)] ± (.XX) ± (.XXX)]		THIS DOCUMENT AND THE INFORMATION CONTAINED THEREIN ARE PROPRIETARY TO TRIPAC AUTOMOTIVE AND SHALL NOT BE USED OR DISCLOSED TO OTHERS, IN WHOLE OR IN PART, WITHOUT THE WRITTEN AUTHORIZATION OF TRIPAC AUTOMOTIVE.	
MATERIAL: SEE NOTES		SURFACES HOLE DIA HOLE SPACE HOLE LOC ✓ ± .XX ± .XX ± .XX ± (.XXX) ± (.XXX) ± (.XXX) NON-CUMULATIVE		TITLE FAN ASM, 17" SLIMLINE 12V 2 SPEED, FULL LEAD	
FINISH: NONE		DIMENSIONS IN (PARENTHESES) ARE FOR INFORMATION ONLY. TOLERANCES DO NOT APPLY. ♦ DIAMONDS REPRESENT EITHER SPEC REQUIRED OR 100% VERIFICATION REQUIRED.		SIZE C	DRAWING NO. 14-SL17R9
WEIGHT (KG): - MFG/PURCH: M		NEXT DRAWING:		SHEET 1 OF 2 REV B	SCALE: NONE

D

C

B

A



REV	ECR #	DESCRIPTION	CHG BY	APP'D BY	DATE
B	08-003	UPDATE PERFORM. SPEC. ADD BACK VIEW W/ ZIPTIE LOCATIONS LEAD LENGTH WAS (750). MOTOR SCREWS WERE 14-7071, REMOVED VIEW	AP	RD	3/6/08
A	06-020	UPDATED NOTES. WIRE COLORS WERE BLUE & YELLOW ADDED ZIPTIES. SHROUD PART# WAS 20-5017-04. ADDED REF DIM B.7	AP	RD	12/5/06
-		ENGINEERING RELEASE			3/29/06

ITEM #	TRIPAC P/N	DESCRIPTION	QTY
9	13-6005	TIE, 3" CABLE BLACK ZIP	2
8	14-6005	LABEL, FAN P/N DATE(RED & SIL)	1
7	20-3017	FINGERGUARD, 17" SLIMLINE SHROUD	1
6	14-7012	CLIP, MOTOR MOUNT VALEO	1
5	20-3117TP1	BLADE, 17" THREE POINT MOUNT	1
4	19-3001	TORQUE DRIVE, 3 POINT MOUNT	1
3	14-7073	SCREW, M5 X 0.8 -10 TAPTITE	3
2	15-5401	MOTOR, VAL. 12V. 2 SPD 270 WATT	1
1	20-5017-03	SHROUD, 17" SLIMLINE, SERIES 3	1

Component Part List

CAD SYSTEM:
Pro/E Wildfire

THIRD ANGLE PROJECTION

MATERIAL:
SEE NOTES

FINISH:
NONE

WEIGHT (KG): - MFG/PURCH: M

METRIC FORMAT:
UNLESS OTHERWISE SPECIFIED
DIMENSIONS ARE IN MILLIMETERS
WITH IMPERIAL INCH CONVERSIONS IN
(INCHES)

TOLERANCES UNLESS OTHERWISE SPECIFIED:
ANG ± 2°
HOLE DIA ± .00 DEC
HOLE SPACE ± .00 DEC
HOLE LOC ± .00 DEC

SURFACES ± .XX
± .XXX
± .XXX
± .XXX

NON-CUMULATIVE

DIMENSIONS IN (PARENTHESES) ARE FOR
INFORMATION ONLY. TOLERANCES DO NOT APPLY.
DIAMONDS REPRESENT EITHER SPC REQUIRED
OR 100% VERIFICATION REQUIRED.

Tripac International, Inc.
9224 Oak Grove Road
Fort Worth, TX
76140 USA

THIS DOCUMENT AND THE INFORMATION CONTAINED THEREIN ARE
PROPRIETARY TO TRIPAC AUTOMOTIVE AND SHALL NOT BE USED OR
DISCLOSED TO OTHERS, IN WHOLE OR IN PART, WITHOUT THE WRITTEN
AUTHORIZATION OF TRIPAC AUTOMOTIVE.

TITLE
FAN ASM, 17" SLIMLINE
12V 2 SPEED, FULL LEAD

SIZE
DRAWING NO.
14-SL17R9

SHEET 2 OF 2
REV
B

NEXT DRAWING:
SCALE: NONE